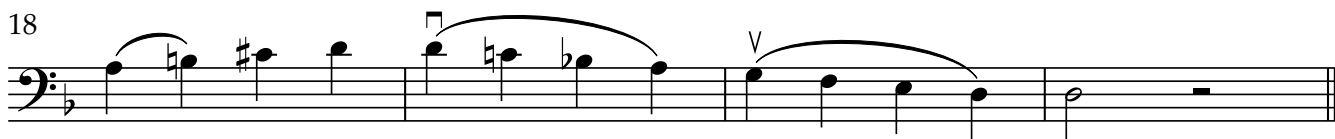
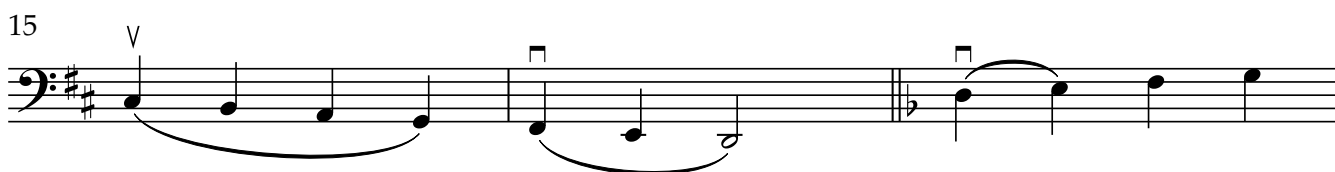
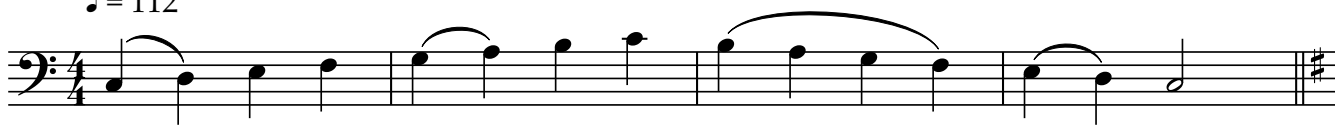


	<p style="text-align: center;">SCALES Quarter note = 120</p>	<p style="text-align: center;">EXCERPT</p>
VIOLINS	<p>AMATI - One octave (enclosed)</p> <ul style="list-style-type: none"> ● C Major ● D Major ● D Melodic minor <p>GUARNERI - 2 octaves (enclosed)</p> <ul style="list-style-type: none"> ● C Major ● D Major ● D Melodic minor <p>STRADIVARI - 3 octaves (format of your choice)</p> <ul style="list-style-type: none"> ● B-flat Major ● D Major ● A Melodic minor 	Play enclosed excerpt.
VIOLA	<p>AMATI - One octave (enclosed)</p> <ul style="list-style-type: none"> ● C Major ● D Major ● D Melodic minor <p>GUARNERI - 2 octaves (enclosed)</p> <ul style="list-style-type: none"> ● C Major ● D Major ● D Melodic minor <p>STRADIVARI - 3 octaves (format of your choice)</p> <ul style="list-style-type: none"> ● B-flat Major ● D Major ● A Melodic minor 	Play enclosed excerpt.
CELLO	<p>AMATI - One octave (enclosed)</p> <ul style="list-style-type: none"> ● C Major ● D Major ● D Melodic minor <p>GUARNERI - 2 octaves (enclosed)</p> <ul style="list-style-type: none"> ● C Major ● D Major ● D Melodic minor <p>STRADIVARI - 2 octaves (format of your choice)</p> <ul style="list-style-type: none"> ● B-flat Major ● D Major ● A Melodic minor 	Play enclosed excerpt.
BASS	AMATI - One octave (enclosed)	Play enclosed

	<p style="text-align: center;">SCALES Quarter note = 120</p>	<p style="text-align: center;">EXCERPT</p>
	<ul style="list-style-type: none"> ● C Major ● D Major ● D Melodic minor <p>GUARNERI - 2 octaves (enclosed)</p> <ul style="list-style-type: none"> ● C Major ● D Major ● D Melodic minor <p>STRADIVARI - 2 octaves (format of your choice)</p> <ul style="list-style-type: none"> ● B-flat Major ● D Major ● A Melodic minor 	<p>excerpt.</p>

Amati Orchestra - Bass Scales

♩ = 112



Amati - Bass Excerpt

CHROMATIC ETUDE

Wohlfahrt Op. 45, no.16

Musical score for Chromatic Etude, Wohlfahrt Op. 45, no.16. The score is written in bass clef with a 3/4 time signature. It consists of two staves. The first staff contains measures 1 through 8, with fingering numbers (I, II, III) and circled measure numbers (5, 9) indicating specific points of interest. The second staff contains measures 9 through 16, also with fingering numbers and circled measure numbers (13, 16). The piece is characterized by its chromatic movement and technical demands.

FARANDOLE

Allegro

Bizet

Musical score for Farandole, Bizet. The score is written in treble clef with a 3/4 time signature. It consists of two staves. The first staff contains measures 1 through 8, with a forte dynamic marking (*f*) and a circled measure number (5). The second staff contains measures 9 through 16, with a circled measure number (9) and the word *Fine* below it. The third staff contains measures 17 through 24, with a circled measure number (19) and the instruction *D. C. al Fine* at the end. The piece is characterized by its lively tempo and rhythmic patterns.