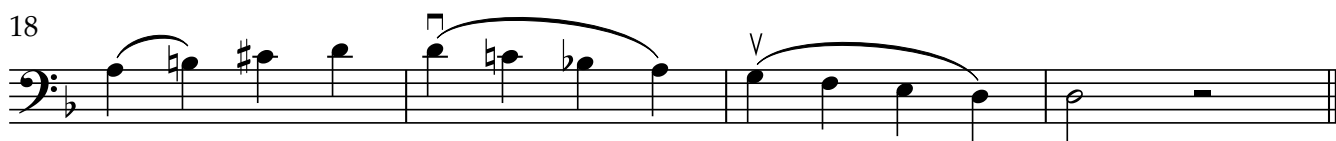
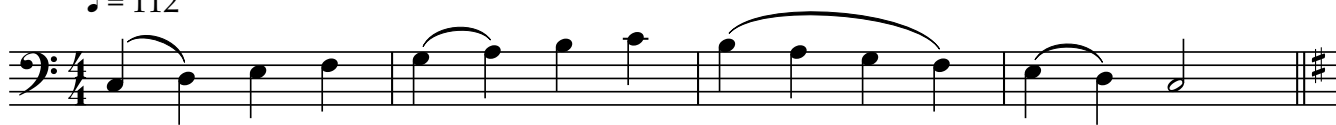


	<p align="center">SCALES Quarter note = 120</p>	<p align="center">EXCERPT</p>
<p>VIOLINS</p>	<p>AMATI - One octave (enclosed)</p> <ul style="list-style-type: none"> ● C Major ● D Major ● D Melodic minor <p>GUARNERI - 2 octaves (enclosed)</p> <ul style="list-style-type: none"> ● C Major ● D Major ● D Melodic minor <p>STRADIVARI - 3 octaves (format of your choice)</p> <ul style="list-style-type: none"> ● B-flat Major ● D Major ● A Melodic minor 	<p>Play enclosed excerpt.</p>
<p>VIOLA</p>	<p>AMATI - One octave (enclosed)</p> <ul style="list-style-type: none"> ● C Major ● D Major ● D Melodic minor <p>GUARNERI - 2 octaves (enclosed)</p> <ul style="list-style-type: none"> ● C Major ● D Major ● D Melodic minor <p>STRADIVARI - 3 octaves (format of your choice)</p> <ul style="list-style-type: none"> ● B-flat Major ● D Major ● A Melodic minor 	<p>Play enclosed excerpt.</p>
<p>CELLO</p>	<p>AMATI - One octave (enclosed)</p> <ul style="list-style-type: none"> ● C Major ● D Major ● D Melodic minor <p>GUARNERI - 2 octaves (enclosed)</p> <ul style="list-style-type: none"> ● C Major ● D Major ● D Melodic minor <p>STRADIVARI - 2 octaves (format of your choice)</p> <ul style="list-style-type: none"> ● B-flat Major ● D Major ● A Melodic minor 	<p>Play enclosed excerpt.</p>
<p>BASS</p>	<p>AMATI - One octave (enclosed)</p>	<p>Play enclosed</p>

	<p style="text-align: center;">SCALES Quarter note = 120</p>	<p style="text-align: center;">EXCERPT</p>
	<ul style="list-style-type: none"> ● C Major ● D Major ● D Melodic minor <p>GUARNERI - 2 octaves (enclosed)</p> <ul style="list-style-type: none"> ● C Major ● D Major ● D Melodic minor <p>STRADIVARI - 2 octaves (format of your choice)</p> <ul style="list-style-type: none"> ● B-flat Major ● D Major ● A Melodic minor 	<p>excerpt.</p>

Amati Orchestra - Double Bass Scales

♩ = 112



Amati - Bass Excerpt

CHROMATIC ETUDE

Wohlfahrt Op. 45, no.16

Musical score for Chromatic Etude, Wohlfahrt Op. 45, no.16. The score is written in bass clef with a 3/4 time signature. It consists of two staves. The first staff contains measures 1 through 8, with fingering numbers (I, II, III) and circled measure numbers (5, 9) indicating specific points of interest. The second staff contains measures 9 through 16, also with fingering numbers and circled measure numbers (13, 16). The piece concludes with a final note in measure 16.

FARANDOLE

Allegro

Bizet

Musical score for Farandole, Bizet. The score is written in treble clef with a 3/4 time signature. It consists of two staves. The first staff contains measures 1 through 8, with a forte dynamic marking (*f*) and a circled measure number (5). The second staff contains measures 9 through 16, with a circled measure number (9) and the word *Fine* below it. The third staff contains measures 17 through 24, with a circled measure number (19) and the instruction *D. C. al Fine* at the end. The score includes various fingering numbers and articulation marks.