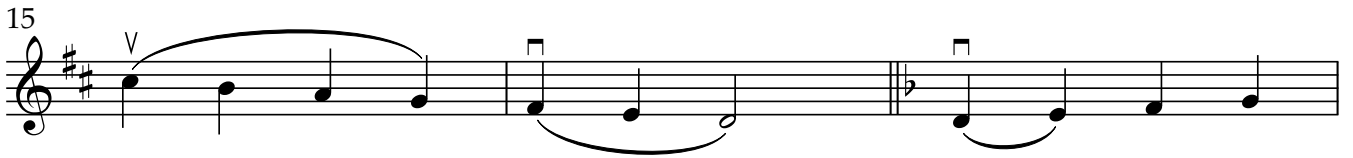
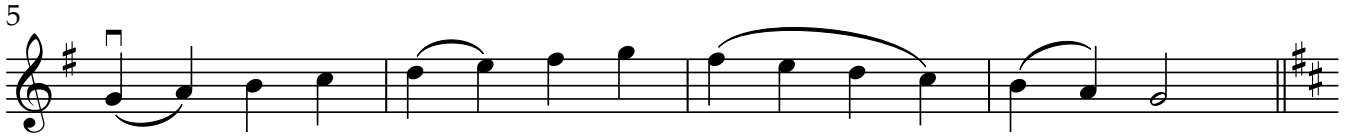


	<p style="text-align: center;">SCALES Quarter note = 120</p>	<p style="text-align: center;">EXCERPT</p>
<p>VIOLINS</p>	<p>AMATI - One octave (enclosed)</p> <ul style="list-style-type: none"> ● C Major ● D Major ● D Melodic minor <p>GUARNERI - 2 octaves (enclosed)</p> <ul style="list-style-type: none"> ● C Major ● D Major ● D Melodic minor <p>STRADIVARI - 3 octaves (format of your choice)</p> <ul style="list-style-type: none"> ● B-flat Major ● D Major ● A Melodic minor 	<p>Play enclosed excerpt.</p>
<p>VIOLA</p>	<p>AMATI - One octave (enclosed)</p> <ul style="list-style-type: none"> ● C Major ● D Major ● D Melodic minor <p>GUARNERI - 2 octaves (enclosed)</p> <ul style="list-style-type: none"> ● C Major ● D Major ● D Melodic minor <p>STRADIVARI - 3 octaves (format of your choice)</p> <ul style="list-style-type: none"> ● B-flat Major ● D Major ● A Melodic minor 	<p>Play enclosed excerpt.</p>
<p>CELLO</p>	<p>AMATI - One octave (enclosed)</p> <ul style="list-style-type: none"> ● C Major ● D Major ● D Melodic minor <p>GUARNERI - 2 octaves (enclosed)</p> <ul style="list-style-type: none"> ● C Major ● D Major ● D Melodic minor <p>STRADIVARI - 2 octaves (format of your choice)</p> <ul style="list-style-type: none"> ● B-flat Major ● D Major ● A Melodic minor 	<p>Play enclosed excerpt.</p>
<p>BASS</p>	<p>AMATI - One octave (enclosed)</p>	<p>Play enclosed</p>

	<p style="text-align: center;">SCALES Quarter note = 120</p>	<p style="text-align: center;">EXCERPT</p>
	<ul style="list-style-type: none"> ● C Major ● D Major ● D Melodic minor <p>GUARNERI - 2 octaves (enclosed)</p> <ul style="list-style-type: none"> ● C Major ● D Major ● D Melodic minor <p>STRADIVARI - 2 octaves (format of your choice)</p> <ul style="list-style-type: none"> ● B-flat Major ● D Major ● A Melodic minor 	<p>excerpt.</p>

Amati Orchestra - Violin Scales

♩ = 112



Amati-Violin Excerpt

CHROMATIC ETUDE

Wohlfahrt Op. 45, no.16

Musical score for Chromatic Etude, Op. 45, no. 16 by Wohlfahrt. The piece is in 3/4 time and features a chromatic scale. The score consists of two staves. The first staff contains measures 1 through 8, with fingering numbers 2-2, 4, 4, 5, 2-2, 4, 4, 4, and 4. The second staff contains measures 9 through 14, with fingering numbers 9, 4, 1-1, 13, 4, 4, and 0. The key signature has one sharp (F#).

FARANDOLE

Bize

Allegro

Musical score for Farandole by Bize. The piece is in common time (C) and features a lively, rhythmic melody. The score consists of three staves. The first staff starts with a forte (*f*) dynamic and contains measures 1 through 5, with fingering numbers 4 and 5. The second staff contains measures 6 through 9, with a *Fine* marking and fingering numbers 9 and 9. The third staff contains measures 10 through 13, with a *H3* marking and fingering numbers 4 and 13. The key signature has one sharp (F#).