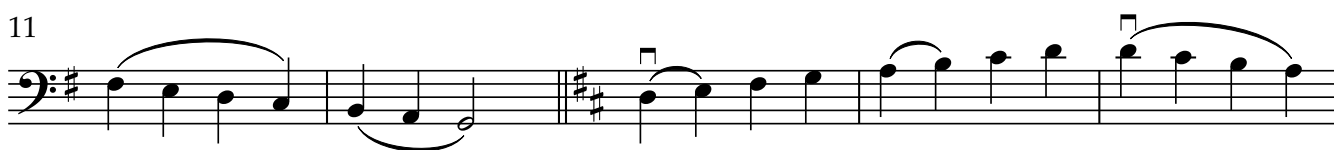
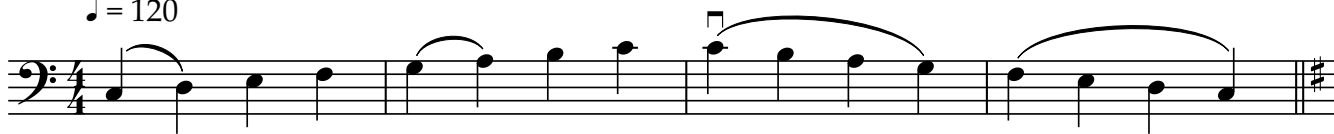


	<p style="text-align: center;">SCALES Quarter note = 120</p>	<p style="text-align: center;">EXCERPT</p>
<p>VIOLINS</p>	<p>AMATI - One octave (enclosed)</p> <ul style="list-style-type: none"> ● C Major ● D Major ● D Melodic minor <p>GUARNERI - 2 octaves (enclosed)</p> <ul style="list-style-type: none"> ● C Major ● D Major ● D Melodic minor <p>STRADIVARI - 3 octaves (format of your choice)</p> <ul style="list-style-type: none"> ● B-flat Major ● D Major ● A Melodic minor 	<p>Play enclosed excerpt.</p>
<p>VIOLA</p>	<p>AMATI - One octave (enclosed)</p> <ul style="list-style-type: none"> ● C Major ● D Major ● D Melodic minor <p>GUARNERI - 2 octaves (enclosed)</p> <ul style="list-style-type: none"> ● C Major ● D Major ● D Melodic minor <p>STRADIVARI - 3 octaves (format of your choice)</p> <ul style="list-style-type: none"> ● B-flat Major ● D Major ● A Melodic minor 	<p>Play enclosed excerpt.</p>
<p>CELLO</p>	<p>AMATI - One octave (enclosed)</p> <ul style="list-style-type: none"> ● C Major ● D Major ● D Melodic minor <p>GUARNERI - 2 octaves (enclosed)</p> <ul style="list-style-type: none"> ● C Major ● D Major ● D Melodic minor <p>STRADIVARI - 2 octaves (format of your choice)</p> <ul style="list-style-type: none"> ● B-flat Major ● D Major ● A Melodic minor 	<p>Play enclosed excerpt.</p>
<p>BASS</p>	<p>AMATI - One octave (enclosed)</p>	<p>Play enclosed</p>

	<p style="text-align: center;">SCALES Quarter note = 120</p>	<p style="text-align: center;">EXCERPT</p>
	<ul style="list-style-type: none"> ● C Major ● D Major ● D Melodic minor <p>GUARNERI - 2 octaves (enclosed)</p> <ul style="list-style-type: none"> ● C Major ● D Major ● D Melodic minor <p>STRADIVARI - 2 octaves (format of your choice)</p> <ul style="list-style-type: none"> ● B-flat Major ● D Major ● A Melodic minor 	<p>excerpt.</p>

Guarneri Orchestra - Bass Scales

♩ = 120



Guarneri - Bass excerpt

Moderato
"When Love Is Kind"

Musical notation for the first staff of "When Love Is Kind". The key signature has one flat (B-flat) and the time signature is 3/4. The piece begins with a forte (*f*) dynamic. The notation includes fingerings (I, II, III, IV), slurs, and accents. A dashed line above the staff indicates a continuation of the piece.

Musical notation for the second staff of "When Love Is Kind". It continues the piece with fingerings (II, III, I, II) and slurs. A circled number 9 is written above the staff. The piece concludes with a final cadence.

Musical notation for the third staff of "When Love Is Kind". It continues the piece with fingerings (I, II, I, II) and slurs. The piece concludes with a final cadence.

start

Andante
"Londonderry Air"

Musical notation for the first staff of "Londonderry Air". The key signature has one flat (B-flat) and the time signature is 4/4. The piece begins with a piano (*p*) dynamic. The notation includes fingerings (III, V, I, IV), slurs, and accents. A dashed line above the staff indicates a continuation of the piece.

Musical notation for the second staff of "Londonderry Air". It continues the piece with fingerings (III, II, III, IV, III, I) and slurs. The piece concludes with a final cadence.

Musical notation for the third staff of "Londonderry Air". It continues the piece with fingerings (I, V, 0, II, I, 4, 1/2 V) and slurs. The piece concludes with a final cadence.

9

Musical notation for the fourth staff of "Londonderry Air". It continues the piece with fingerings (V) and slurs. The piece concludes with a final cadence.

13

Musical notation for the fifth staff of "Londonderry Air". It continues the piece with fingerings (V, III, 1, 4, I) and slurs. The piece concludes with a final cadence.

end