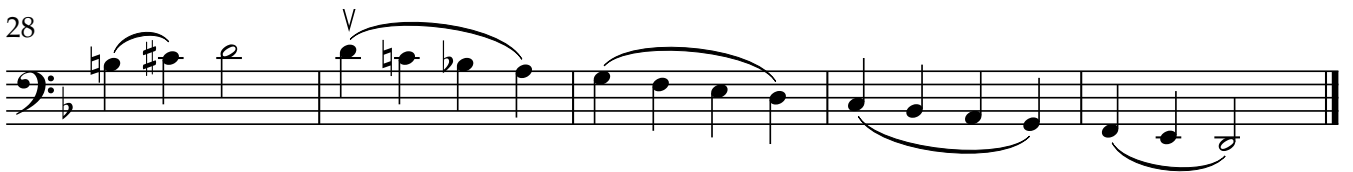
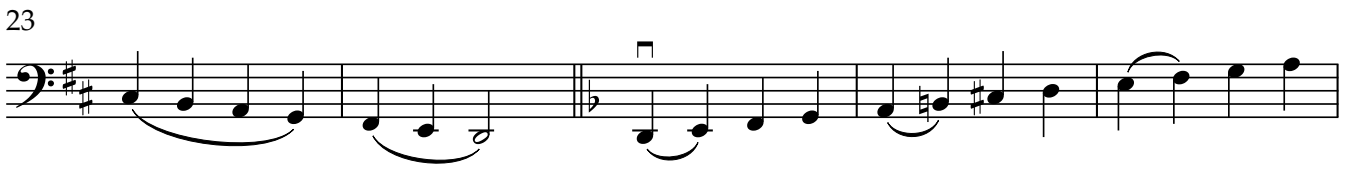
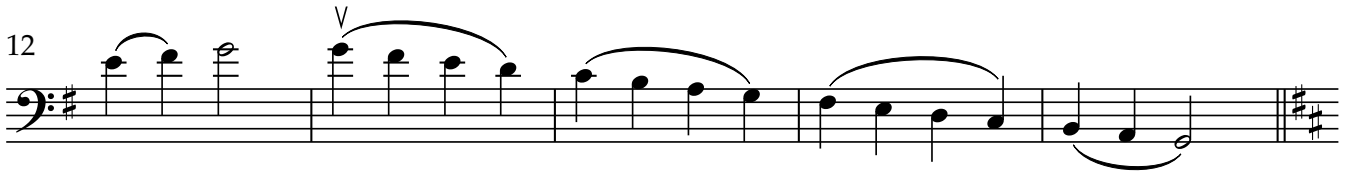
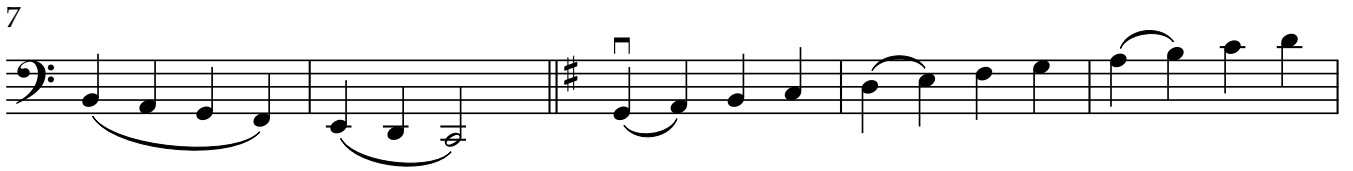


	<p align="center"><b>SCALES</b> Quarter note = 120</p>	<p align="center"><b>EXCERPT</b></p>
<p><b>VIOLINS</b></p>	<p>AMATI - One octave (enclosed)</p> <ul style="list-style-type: none"> <li>● C Major</li> <li>● D Major</li> <li>● D Melodic minor</li> </ul> <p>GUARNERI - 2 octaves (enclosed)</p> <ul style="list-style-type: none"> <li>● C Major</li> <li>● D Major</li> <li>● D Melodic minor</li> </ul> <p>STRADIVARI - 3 octaves (format of your choice)</p> <ul style="list-style-type: none"> <li>● B-flat Major</li> <li>● D Major</li> <li>● A Melodic minor</li> </ul>	<p>Play enclosed excerpt.</p>
<p><b>VIOLA</b></p>	<p>AMATI - One octave (enclosed)</p> <ul style="list-style-type: none"> <li>● C Major</li> <li>● D Major</li> <li>● D Melodic minor</li> </ul> <p>GUARNERI - 2 octaves (enclosed)</p> <ul style="list-style-type: none"> <li>● C Major</li> <li>● D Major</li> <li>● D Melodic minor</li> </ul> <p>STRADIVARI - 3 octaves (format of your choice)</p> <ul style="list-style-type: none"> <li>● B-flat Major</li> <li>● D Major</li> <li>● A Melodic minor</li> </ul>	<p>Play enclosed excerpt.</p>
<p><b>CELLO</b></p>	<p>AMATI - One octave (enclosed)</p> <ul style="list-style-type: none"> <li>● C Major</li> <li>● D Major</li> <li>● D Melodic minor</li> </ul> <p>GUARNERI - 2 octaves (enclosed)</p> <ul style="list-style-type: none"> <li>● C Major</li> <li>● D Major</li> <li>● D Melodic minor</li> </ul> <p>STRADIVARI - 2 octaves (format of your choice)</p> <ul style="list-style-type: none"> <li>● B-flat Major</li> <li>● D Major</li> <li>● A Melodic minor</li> </ul>	<p>Play enclosed excerpt.</p>
<p><b>BASS</b></p>	<p>AMATI - One octave (enclosed)</p>	<p>Play enclosed</p>

	<b>SCALES</b> Quarter note = 120	<b>EXCERPT</b>
	<ul style="list-style-type: none"><li>● C Major</li><li>● D Major</li><li>● D Melodic minor</li></ul> <p>GUARNERI - 2 octaves (enclosed)</p> <ul style="list-style-type: none"><li>● C Major</li><li>● D Major</li><li>● D Melodic minor</li></ul> <p>STRADIVARI - 2 octaves (format of your choice)</p> <ul style="list-style-type: none"><li>● B-flat Major</li><li>● D Major</li><li>● A Melodic minor</li></ul>	excerpt.

# Guarneri Scales - Cello Scales

♩ = 120



# Guarneri - Cello Excerpt

LEE

Moderato

417 *mf* V 1 (5) *mf* V

(9) *f* *mf* V 4 2 1

(13) V 1 4 2 3 0 V 4 2 1 2 *mf* (17)

(21) V 1 4 1 4 2 4 1 4 *mf*

*end* (25) *mp* V 2 1 4 2 4 1 0 2 1 4 2 1 3 1 4 0 2 *mf* (29)

(33) *f* (35) 4 2 1 4 2 *mf*

(39) *mf* (43) V *mf*

(47) V

(51) 2 0 1 4 3 0 (53) 4 3 2 4 3 0 (55) 3 0 2 1 4 2 4 1

(61) V *mp*

Detailed description of the musical score: The score consists of ten staves of music in 4/4 time, marked 'Moderato'. It begins at measure 417 with a mezzo-forte (*mf*) dynamic and a bowing instruction 'V'. The first staff contains measures 417-420, with a first finger fingering '1' above the final note. The second staff contains measures 421-424, featuring a forte (*f*) dynamic, a bowing instruction 'V', and fingerings '3', '0', '4', '1', '4', '3', '2'. The third staff contains measures 425-428, with a mezzo-forte (*mf*) dynamic, a bowing instruction 'V', and fingerings '1', '4', '2', '3', '0', '4', '2', '1', '2'. The fourth staff contains measures 429-432, with a mezzo-forte (*mf*) dynamic, a bowing instruction 'V', and fingerings '1', '4', '1', '4', '2', '4', '1', '4'. The fifth staff contains measures 433-436, with a mezzo-piano (*mp*) dynamic, a bowing instruction 'V', and fingerings '1', '4', '2', '4', '1', '0', '2', '1', '4', '2', '1', '3', '1', '4', '0', '2'. A large 'end' marking is placed over the first measure of this staff. The sixth staff contains measures 437-440, with a mezzo-forte (*mf*) dynamic, a bowing instruction 'V', and fingerings '2', '3', '2', '1', '4', '2', '1', '4', '2'. The seventh staff contains measures 441-444, with a mezzo-forte (*mf*) dynamic, a bowing instruction 'V', and fingerings '1', '4', '2', '1', '4', '2'. The eighth staff contains measures 445-448, with a mezzo-forte (*mf*) dynamic, a bowing instruction 'V', and fingerings '3', '4', '1', '4', '2', '1', '4', '2', '1', '4', '2'. The ninth staff contains measures 449-452, with a mezzo-forte (*mf*) dynamic, a bowing instruction 'V', and fingerings '1', '4', '2', '1', '4', '2', '1', '4', '2', '1', '4', '2', '1'. The tenth staff contains measures 453-456, with a mezzo-piano (*mp*) dynamic, a bowing instruction 'V', and fingerings '1', '4', '2', '1', '4', '2', '4', '1', '4', '2', '1', '4', '2', '4', '1'. The score concludes with a repeat sign at the end of the final measure.